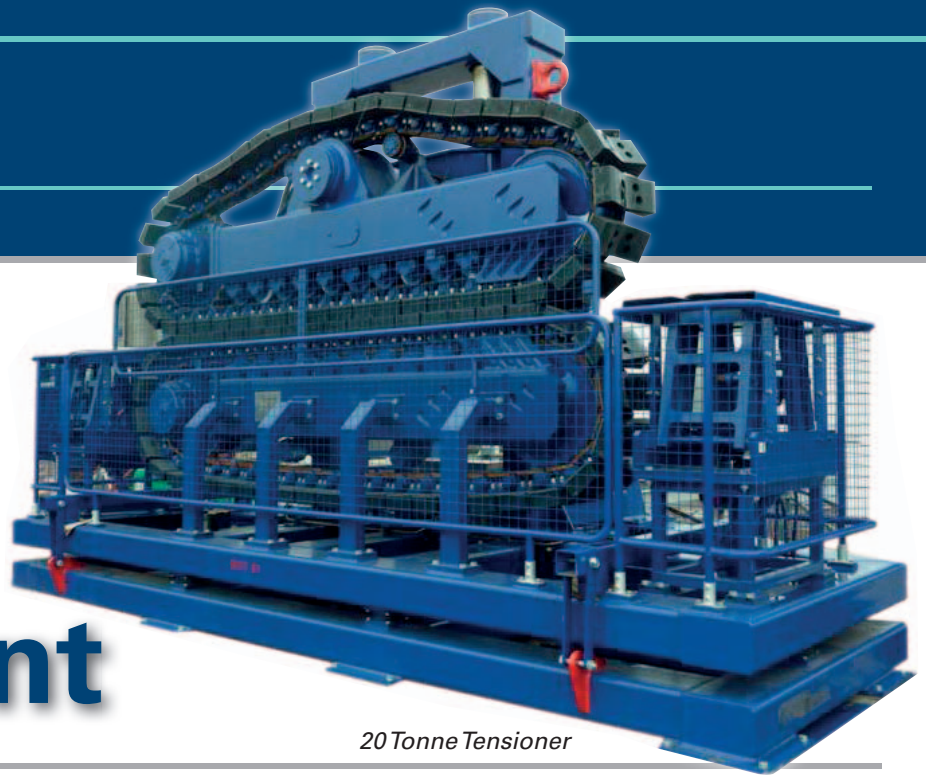


# Modular Equipment



*20 Tonne Tensioner*

## Hire

GMSL depot facilities in Portland and Batam are a home to an array of world class marine engineering vehicles and equipment all developed for use in a variety of marine engineering projects. We have invested heavily in this technology because we work in incredibly tough and varied terrain. These sophisticated tools are now available for hire.

Your marine project, wherever it is in the world, may well benefit from our research and development, especially when time is of the essence and the weather is against you. Whether your project involves deep sea or coastal operations, is for commercial, academic or government use, it is highly likely that we have exactly what you're looking for when planning your marine engineering project.

If you cannot find the solution required within the brochure it is still worth a call as other assets are still available within GMSL or our joint venture companies.

## Hire Equipment

- A-Frames
- Cable Detection Probes
- Cable Engine Drum
- Cable Engine Linear
- Chutes
- Cranes
- C&H Grapnels
- De-trenching Grapnels
- Generator Sets
- Winches
- Load Links
- Power Packs
- Measuring Wheels
- Running Line Monitors
- Saddleback Dynamometers
- Carousel, Powered Drum Spoolers and Underroller Systems
- Acoustic Release Hooks & Command Units
- Office , Workshops, Changing room Containers
- Grapnels and Cable Working Equipment
- Rigging Lofts and inventory
- Small Survey ROV's

## Contact details

**Peter Howson** Tel: +44(0) 1305 828091 Mobile +44(0) 7773 337851  
 peter.howson@globalmarinesystems.com

**Jeff Halford** Tel: +44(0) 1305 828055 Mobile +44(0) 7767 647588  
 jeff.halford@globalmarinesystems.com



---

## A Frames :

Ranging from 4Te to 35Te A Frames.

---

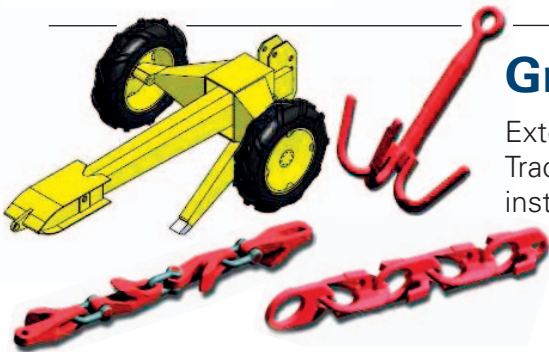


## Office, Workshops, Changing room Containers Rigging Lofts and inventory :

A selection of ISO 20' fully certified containers.

Containerised rigging and workshop containers. Fully equipped with standard Global Marine inventory the rigging loft can be upgraded to meet customer requirements. All equipment where necessary is fully certified.

---



## Grappels and Cable Working Gear :

Extensive range of Grappels, Swivel, Tow Ropes, Stern Chutes, Trackway and all types of rigging equipment commonly used for cable installations.

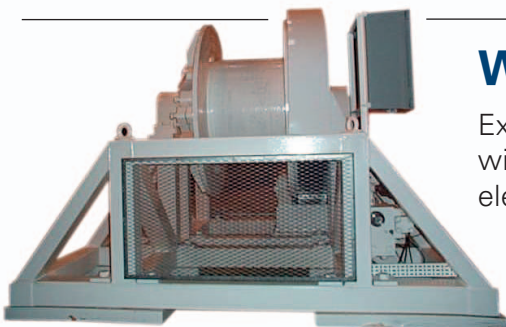
---



## Cable Engine Linear 20Te hauler and others :

Extensive range of Linear wheeled cable engines, tracked cable engines, cable transporters ranging

---



## Winches :

Extensive range of towing winches up to 60Te, Plough/ROV umbilical winches, tigger winches ranging from 1 to 20TE. Winches vary from electric, air and hydraulic drive.

---



## Power Packs :

Extensive range of Hydraulic Power Packs ranging from 20kw to 150kw. Electric and diesel driven units.

---

---

## Measuring Wheels Load Links Running Line Monitors Saddleback Dynamometers :

Fully calibrated load link 10 to 50 Te range, wireless and remote readouts. Range of cable measuring devices either mechanical or electrical operated.

Running Line Monitor Units up to 50 Te tension monitoring and wire sizes ranging from 19 to 46mm. Local and remote readouts available.

Saddlebacks Dynamometers measuring cable tensions over a smooth or roller type saddle via a shear beam load cell. Saddlebacks can be used also for small vessel PLGR type operations with the inclusion of fair lead bed plate system.

Local and remote readouts available.



---

## Carousel, Powered Drum Spoolers and Underrolling System :

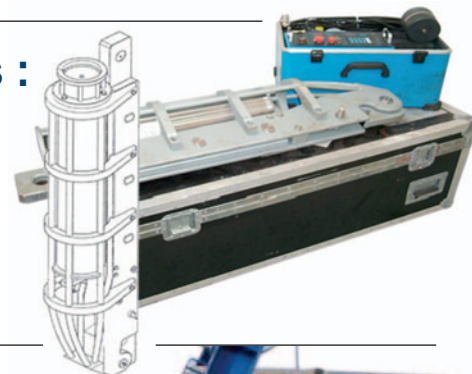
Units available for a variety of applications from cable storage, installation, transferring to back tensioning. Units vary from 10 to 7000Te.



---

## Acoustic Release Hooks & Command Units :

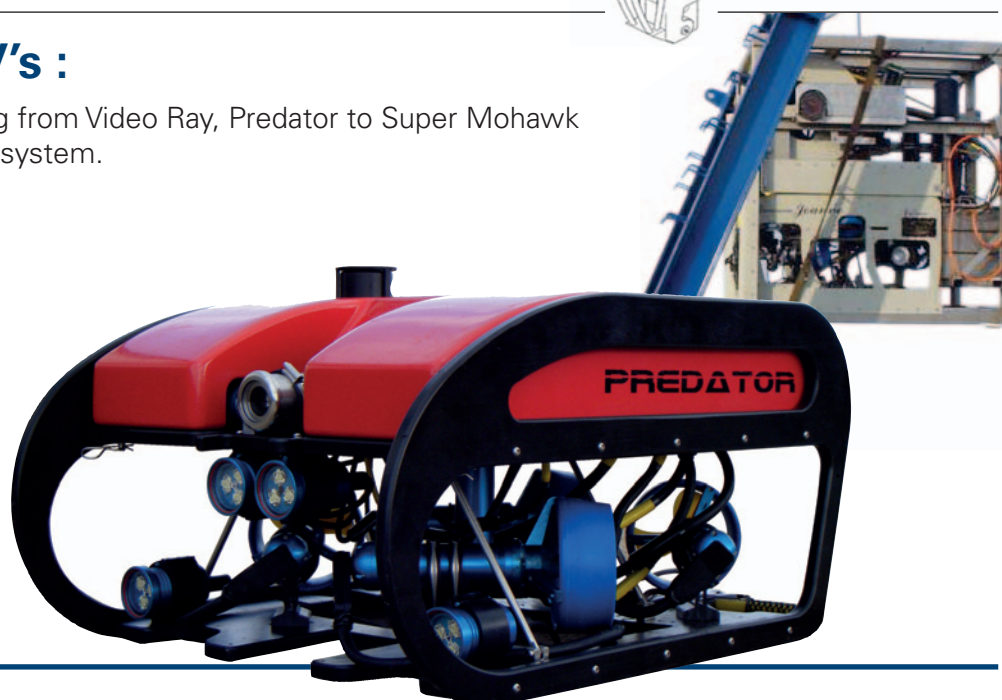
5 to 30Te Release Hooks designed for deployment over sheaves under load and unique acoustic signal release command units.

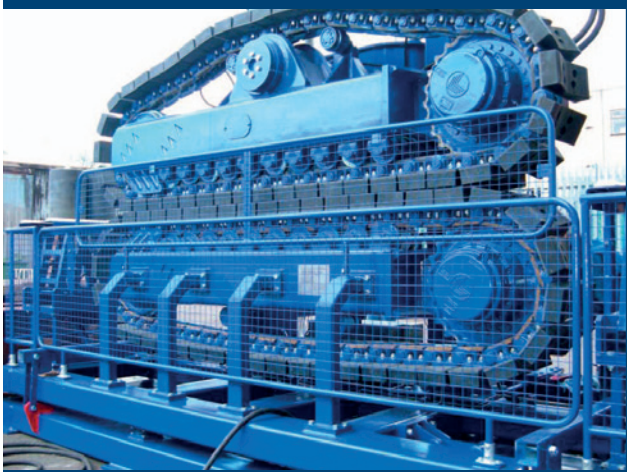
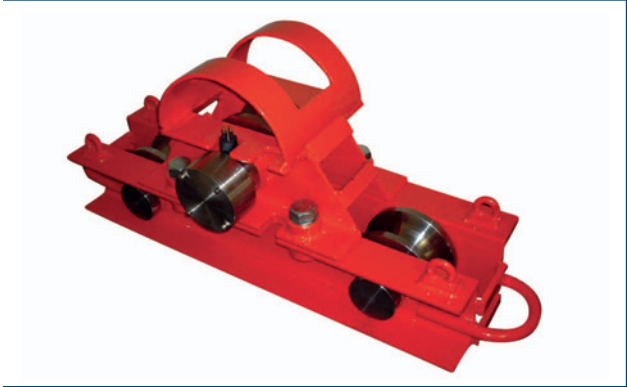


---

## Small Survey ROV's :

Small survey type ROVs ranging from Video Ray, Predator to Super Mohawk with full garaged type handling system.





All performance figures quoted are nominal, actual performance is dependent on environmental conditions prevailing at the time of operations.

© Copyright

