

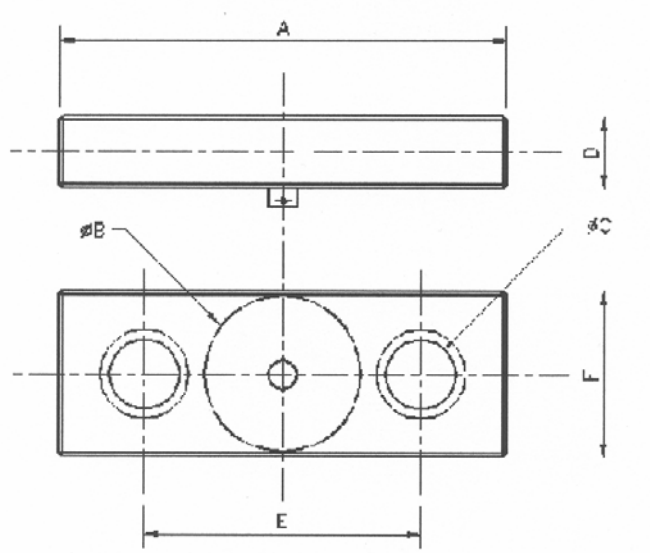


Standard Tensile Links

Manufacturer	DLM Ltd
--------------	---------

DYNAMIC LOAD MONITORING (UK) LTD
 Unit 3 Bridgers Farm, Nursling Street, Nursling, Southampton SO16 0YA
 Tel: (023) 8074 1700 - Fax: (023) 8074 1701

Standard Tensile Links



DIMENSIONS AND SPECIFICATIONS										
Load Capacity (tonnes)	Dimensions (millimetres)						Accuracy % FRO	Proof test % SWL	Weight (kg)	Resolution (kg)
	A	Ø B	Ø C	D	E	F				
2	215	82.5	28	24	145	86.5	±0.2	200	2	1
5	215	82.5	28	24	145	88	±0.2	200	2	2
10	236	82.5	37	38	146	88	±0.2	200	5	10
20	340	82.5	53	48	210	106	±0.2	200	10	10
25	340	82.5	53	48	210	106	±0.2	200	10	10
40	410	102	74	50	242	150	±0.2	150	15	50
50	410	102	74	58	234	150	±0.2	150	20	50
100	475	105	88	70	275	170	±0.3	150	35	100

MATERIAL: Matt chrome plated steel

OPERATING TEMP RANGE: -10°C to +60°C

SUPPLIED WITH: battery-powered hand-held display unit, 10m signal cable, carrying / stowage case

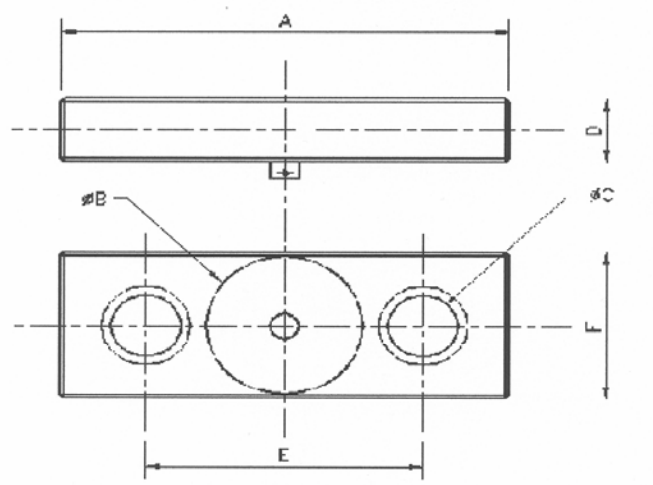
CALIBRATION: supplied with calibration, proof load and test certificates to BS EN 10002/2 1992

SPECIFICATION CHANGES: the company's policy is one of continual development and the company reserves the right to effect changes to the published specification without prior notice.

DYNAMIC LOAD MONITORING (UK) LTD

Unit 3 Bridgers Farm, Nursling Street, Nursling, Southampton SO16 0YA
Tel: (023) 8074 1700 - Fax: (023) 8074 1701

Standard Tensile Links



DIMENSIONS AND SPECIFICATIONS

Load Capacity (tonnes)	Dimensions (millimetres)						Accuracy % FRO	Proof test % SWL	Weight (kg)	Resolution (kg)
	A	Ø B	Ø C	D	E	F				
2	215	82.5	28	24	145	86.5	±0.2	200	2	1
5	215	82.5	28	24	145	88	±0.2	200	2	2
10	236	82.5	37	38	146	88	±0.2	200	5	10
20	340	82.5	53	48	210	106	±0.2	200	10	10
25	340	82.5	53	48	210	106	±0.2	200	10	10
40	410	102	74	50	242	150	±0.2	150	15	50
50	410	102	74	58	234	150	±0.2	150	20	50
100	475	105	88	70	275	170	±0.3	150	35	100

MATERIAL: Matt chrome plated steel

OPERATING TEMP RANGE: -10°C to +60°C

SUPPLIED WITH: battery-powered hand-held display unit, 10m signal cable, carrying / stowage case

CALIBRATION: supplied with calibration, proof load and test certificates to BS EN 10002/2 1992

SPECIFICATION CHANGES: the company's policy is one of continual development and the company reserves the right to effect changes to the published specification without prior notice.