



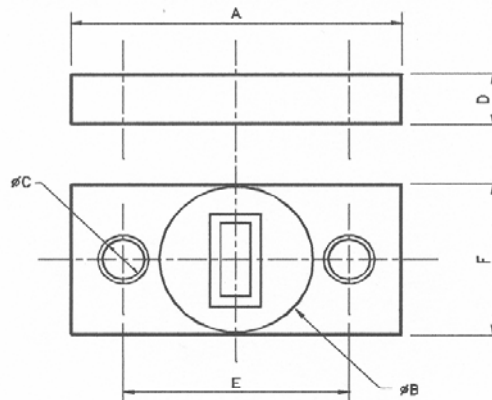
In Link Display Tensile

Manufacturer	DLM Ltd
--------------	---------

In Link Display Tensile Links

The **DLM In-Link Display Tensile Link** is manufactured in a range of sizes to suit safe working loads of 1 to 100 tonnes. Its practical design, reliable instrumentation and robust construction have made this product an industry standard. The LCD display has large, easy to read digits (15mm for links up to 5t SWL, and 20mm for 10t upwards). The unit is powered by an internal ni-cad battery for which a suitable battery charger is supplied.

An optionally available hand-held follower provides the versatility to suit most applications.



DIMENSIONS AND SPECIFICATIONS

Load Capacity (tonnes)	Dimensions (millimetres)						Accuracy % FRO	Proof test % SWL	Weight (kg)	Resolution (kg)
	A	Ø B	Ø C	D	E	F				
2	220	102	28	34.5	150	106	±0.2	200	3	1
5	220	102	28	34.5	150	106	±0.2	200	3	10
10	260	114	37	43	170	120	±0.2	200	7	10
20	340	114	53	49	210	140	±0.2	200	13	10
40 & 50	410	114	74	62.5	250	150	±0.2	150	20	100
100	475	114	88	70	275	170	±0.3	150	40	100

MATERIAL: Matt chrome plated steel

OPERATING TEMP RANGE: -10°C to +60°C

SUPPLIED WITH: re-chargeable battery, indicating battery charger & carrying / stowage case *

CALIBRATION: supplied with calibration, proof load and test certificates to BS EN 10002/2 1992

FOLLOWER: a 3½ digit hand-held follower display and 10m signal cable are available as chargeable options.

* ABS case with links up to 5t SWL; robust and waterproof *Pelican* with those 10t – 50t SWL; and purpose built wooden case with larger sizes.

SPECIFICATION CHANGES: the company's policy is one of continual development and the company reserves the right to effect changes to the published specification without prior notice.